

POPULATION STUDIES CENTER NEWSLETTER

Welcome Back

As many of you may have noticed the [PSC website](#) looks a bit different in 2018 and we are ironing out the final kinks and making sure everything that was accessible before remains accessible with our new facelift. The PSC website has a brand new color scheme, new layouts on several pages and more. We'd like to hear your feedback and please let us know if you see anything irregular.



The new [Spotlight](#) area toward the bottom of the home page is meant to show the breadth and scope of research interests and expertise at the PSC. They are formatted in an interview style to highlight personal experiences of PSC researchers from all sectors of the PSC and the intent is to give people a better idea of the diversity, interdisciplinarity and rigor of the research and scientists that comprise the center. If you are interested in appearing in a Spotlight [please email us](#).

Congratulations to Luca Maria Pesando winner of the 2017 Etienne van de Walle prize!

The [Etienne van de Walle Prize](#) is awarded biennially for the best paper in demography written by a graduate student at the University of Pennsylvania. The prize honors a man of intense intellectual curiosity whose research covered a broad sweep of human experience. This award honors the memory of Etienne van de Walle, a world-renowned Penn demographer who was tireless in his support of graduate training and research. [Luca Maria Pesando's](#) paper is titled "Beyond Attendance: Gendered Impacts of a Cash Transfer for Education and the Unpaid Care Burden in Rural Morocco."



From left to right: Jeffrey Lin, Iouri Manovskii, Mallick Hossain, and Keith Sill.

Philadelphia Federal Statistical Research Data Center Grand Opening!

Learn about our new partner, the Philadelphia Federal Statistical Research Data Center. Speakers at the opening celebration included: **Nancy Potok**, Chief Statistician of the United States, **Ron Jarmin**, Performing the Nonexclusive Functions and Duties of the Director of the U.S. Census Bureau, **Keith Sill**, Senior Vice President and Director, Real-Time Research Data Center, Federal Reserve Bank of Philadelphia, and PSC Research Associate [Iouri Manovskii](#), Associate Professor of Economics and Co-Director, Philadelphia FSRDC, University of Pennsylvania. PSC Director [Herbert L. Smith](#) and PARC Director [Irma T. Elo](#) were also in attendance, along with [George Mailath](#), Chair of Economics and *ex officio* member of the PSC Executive Committee, and [Monica King](#), ADRF Director, representing the PSC's "big data" initiative. Read the press release [here](#).



The Population Studies Center is now an institutional member of the [Interdisciplinary Association for Population Health Science!](#)

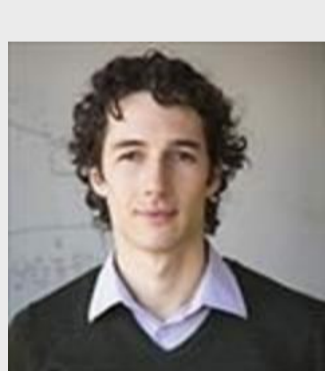


Above are some photos from the Global Age Patterns of Under 5 Mortality project meeting from December 18th 2017 hosted by [Michel Guillot](#) which took place at the [Perry World House](#), a new [allied center](#) of the PSC.

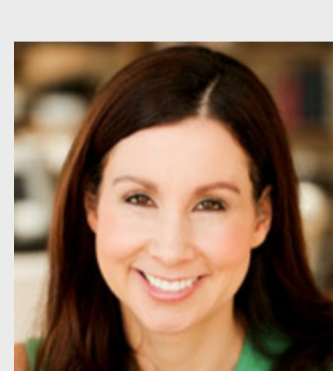
Upcoming events



Penn Economics presents:
Molly Schnell
"Physician Behavior in the Presence of a Secondary Market: The Case of Prescription Opioids"
Today!
January 11
395 McNeil
4-5:30pm



CHIBE at Penn presents:
Jacob Bor
"From Universal Access to Universal Treatment: the Promise and Pitfalls of HIV Treatment-as-Prevention"
Today!
January 11
104 Stellar-Chance, 422
Curie Blvd
12-1pm



Penn Sociology presents:
Lauren Rivera
"When Two Bodies Are (Not) a Problem: Gender and Relationship Status Discrimination in Academic Hiring"
January 17
103 McNeil
12-1pm

INSTITUTE ON AGING VISITING SCHOLARS SERIES // 2018

What does it take to LIVE A LONG AND HEALTHY LIFE?



Anne Newman, MD, MPH
Professor and Chair, Department of Epidemiology
University of Pittsburgh

Dr. Newman is also Director of the Center for Aging and Population Health (CAPH) in the Graduate School of Public Health and has a joint appointment in the Division of Geriatric Medicine in the School of Medicine. She is internationally renowned for her work in the epidemiology of aging, longevity, and disability, and has served as the principal investigator for several long-term studies of aging and longevity. Dr. Newman's research has established the clear potential for old age to be a productive and active period of life.

Wednesday, January 24, 2018
3:00 - 4:00pm
Biomedical Research Building | BRB II/III Auditorium
421 Curie Blvd. Philadelphia, PA 19104

This event is free and open to the public, but registration is requested.

www.med.upenn.edu/aging

215-898-7801

aging@mail.med.upenn.edu



Please contact psc_library@mailman.ssc.upenn.edu to submit news & events or with questions.

Share this email:



[Manage](#) your preferences | [Opt out](#) using TrueRemove™

Got this as a forward? [Sign up](#) to receive our future emails.

View this email [online](#).

3718 Locust Walk (403 McNeil)
Philadelphia, PA | 19104-6298 US

This email was sent to .
To continue receiving our emails, add us to your address book.

