

POPULATION STUDIES CENTER NEWSLETTER



PENN SOCIOLOGY AND THE POPULATION STUDIES CENTER PRESENT A SPECIAL EDUCATION & INEQUALITY WORKSHOP:

WHAT'S WRONG WITH AMERICAN SCHOOLS

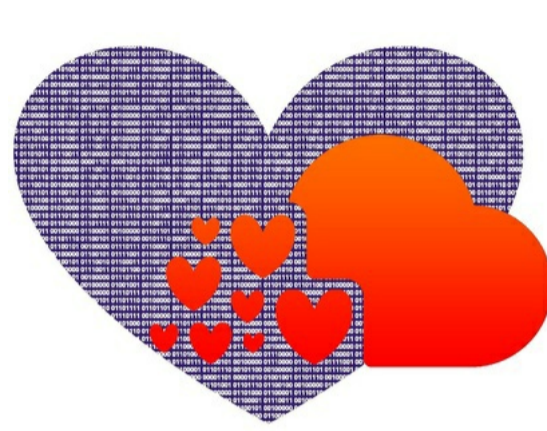
Robert M. Hauser, Executive Officer of the American Philosophical Society and Vilas Research Professor, University of Wisconsin-Madison

FEBRUARY 2, 2018 | 12-1:30PM | LUNCH WILL BE SERVED
169 MCNEIL

Upcoming Events



Penn LDI presents:
Timothy J. Layton
"The Consequences of (Partial) Privatization of Social Insurance for Individuals with Disabilities: Evidence from Medicaid"
Today!
Colonial Penn Center
Auditorium
3641 Locust Walk
12-1:20 pm



Penn presents:
Love Data Month!
Throughout the month of February Penn Libraries and other centers are putting on events about data tools, data privacy, and data visualization. Check out the **full list of events** [here](#).



The PSC presents:
Craig Hadley
"Exploring Competing Ideas About The Relationship Between Body Shape & Health: Evidence From A Global Sample Of Women And Children"
February 5th
103 McNeil
12-1pm



RWJ Health Policy Research Scholars

Health Policy Research Scholars is a national leadership development program for second-year doctoral students in any academic discipline who want to apply their research to help build healthier and more equitable communities. The goal of the program is to train doctoral students to use their discipline-based research training to advance health equity to build a Culture of Health, one that enables everyone to live longer, healthier lives. The deadline to apply for this opportunity is **March 14th 2018!** More information about the program and application [here](#).

PSC Colloquium: Xiaoying Liu

This week Xiaoying Liu, visiting scholar at the PSC, presented her paper "What Happens in the Womb under the Dome: The Impact of Air Pollution on Birth Outcomes – Evaluation of air quality improvement during the Guangzhou 2010 Asian Games and Asian Paralympic Games". Check out the video below and other videos on the [PSC Youtube channel](#).



REQUEST FOR PROPOSALS: 2018-19 "Quartet" Pilot Research Project Competition

Proposals focusing on population health and finances and aging in the following areas will be given priority: aging and the life course, economics and finances of health and aging, global health and aging, health disparities, human development and behavior, fertility and reproductive health, and biodemography.

Submission Deadline: Friday, March 23, 2018 by 5pm

Sponsored by the Pension Research Council and the Boettner Center, LDI Center for Health Incentives and Behavioral Economics, the Population Aging Research Center, and the Population Studies Center.

Welcome to our New Post-doctoral Fellows and Visitors

Each semester the PSC sponsors several post-docs, visiting scholars, and students to take part in a research happening at the PSC. We have four new post-docs this semester from around the globe and in an effort to make their presence known we wanted to include them in the weekly newsletter. Feel free to stop in, say hi or send an email! Read more about all the [visitors and post-docs at the PSC](#).



Julio Romero
241 McNeil
julior@sas.upenn.edu
PSC sponsor: Michel Guillot



Andrea Verhulst
580 McNeil
verhulst@sas.upenn.edu
PSC sponsor: Michel Guillot



Fabrice Kampfen
216 McNeil
kampfen@sas.upenn.edu
PSC sponsor: Hans-Peter Kohler



Evandro Piza Duarte
275 McNeil
evandropiza@gmail.com
PSC sponsor: Tukufu Zuberi

Delayed Implementation of New IRB Regulations

The federal government has announced a six month delay in the implementation of the revised Common Rule. The new date is **July, 19, 2018**. All IRB submissions should continue without changes until further notice. Please [email Jan Jaeger](#) with any questions or concerns.

PSC Researchers are encouraged to submit posters for the Sylvan M. Cohen Annual Retreat & Poster Session. Submission details are listed below. Please [contact the Library Staff](#) for any poster needs.

THE SYLVAN M. COHEN ANNUAL RETREAT & POSTER SESSION

Presented by the Institute on Aging with 2018 Co-sponsor, the Population Aging Research Center

Tuesday, May 1, 2018
11:30am - 5:00pm
Smilow Center
Rubenstein Auditorium + Lobby
3400 Civic Center Blvd.
Philadelphia, PA 19104

This event is free and open to the public, but registration is required.

Registration opens: April 2, 2018
Registration deadline: April 26, 2018

www.med.upenn.edu/aging

215-898-7801

aging@penmedicine.upenn.edu

Impact of life course exposures on aging: Longevity reflects our experiences from day to day

Keynote Speaker:
Kenneth M. Langa, MD, PhD
Professor, Department of Internal Medicine; Health Management and Policy, School of Public Health University of Michigan

Penn Presenters:
Courtney Boen, PhD
Assistant Professor of Sociology

Hans-Peter Kohler, PhD
Frederick J. Warren Professor of Demography

Irma T. Elo, PhD
Professor of Sociology

Poster Session Submission

Must include:

- Poster Title
- Category (Basic Science, Clinical Research, or Education & Community)
- Your affiliation
- Names of authors and presenters

Submit your poster online: www.med.upenn.edu/aging

Poster Submission Opens: March 19, 2018
Submission Deadline: April 23, 2018

**** PLEASE NOTE:** New Poster Size requirements: 3x5 **



Please contact psc_library@mailman.ssc.upenn.edu to submit news & events or with questions.

Share this email:



Manage your preferences | [Opt out](#) using TrueRemove™
Got this as a forward? [Sign up](#) to receive our future emails.
View this email [online](#).

3718 Locust Walk (403 McNeil)
Philadelphia, PA | 19104-6298 US

This email was sent to .
To continue receiving our emails, add us to your address book.

